



# Ngati Tahu - Ngati Whaoa

## Runanga Trust

Poututerangi (10th Month of Maori year) Issue 12











# contents

---

Chairs Report

GM Report

Manu o te Ao

Social

Environmental

Obituaries 2020 – 2021

Ohaki Pa

Te Toke Marae

Waimahana Marae

Mataarae Marae



# Chairs Report

Whakarongo ake au ki te tangi a te manu nei e tui,  
tui, tuituia,

Tuia i runga, Tuia raro, Tuia i waho, Tuia i roto, Tuia i  
te here tangata,

Ka rongo te po, Ka rongo te ao.

Ki te kōrero, ki te wānanga,

Kei te wānangananga te po, kei te wānanganga to  
ao,

Ki te whaeao, ki te ao mārama,

Tihei, wā mauri ora!

Kei te mihi ki ngā tini aitua, kua wheturangitia, kua  
tuhonohono ngā mate katoa.

Ki ngā tini mate, haere ngā mate, haere ngā mate,  
haere whakaoti atu.

Mai i te waiheke o Huka,

Whakarāwhiti atu ki te mānia o Kaingaroa,

Heke mai nei ki te tihi o Maunga Kakaramea,

Putā atu ki te pae maunga o Paeroa,

Ko Ōrākei Kōrako te Ūkaipo,

Tai rawa atu ki Pōhaturoa ki Atiamuri,

Ko te awa o Waikato e pokarekare nei,

E te Iwi o Ngāti Tahu-Ngāti Whāoa, tēnā tātou katoa.





**E te Iwi, I mihi to you all during there trying times where COVID is ravaging the country with many of our families falling victim to yet another foriegn pandemic.**

The pandemic has interferred with many aspects of our customary practices, in-particular during times of sadness where families have lost loved ones and have not been able to hold a full and complete Tangihanga process.

Consistent with many other comentators, we have faced adversity over many generations and our Iwi have been able to overcome the odds. We will do so once again by holding fast to our values and principles and by exercising Kotahitanga as our ancestors have done in times gone-by.

Kotahitanga is a non-negotiable tikanga or virtue that we must hold fast to, in order to continue to overcome adversity that will inevitably arise from time to time.

E te Iwi, kia haumaru te noho, ka aroha atu ki a tātou katoa.

#### **Trustee elections:**

I am pleased to announce that arising out of our triennial elections that the following trustees are duly confirmed:

- **Angela Werahiko - Waimahana Mārae electoral college,**
- **Blanche Rewiti - Mataarae Marae electoral college,**
- **Evelyn Forrest - Te Toke Marae electoral college,**
- **Cedric Forrest - Ohaaki Marae electoral college,**
- **Dan Fraser - Kahui Kaumatua Kaunihera electoral college,**
- **Roger Pikia - Te Whai Oranga electoral college.**

Please note that the electoral colleges for the Kaunihera Kaumatua and Te Whai Oranga electoral college run on a five year term.

The electoral process is very robust and has been enshrined in the Trust Deed for well over a decade. A robust due dilligence process was adopted which included consulting Iwi from across the motu to determine the most appropriate structure and process to have approved by the Iwi for inclusion in the Trust Deed. A process that enables all registered members who choose to participate, to engage in the electoral process.

The process achieved 100% approval by the Iwi more than 13 years ago.

Congratulations to those who have once again agreed to help lead the Iwi Authority into the future.

## **Reflections on the year that was 2021:**

2021 was once again, a very busy year for the Runanga as our Iwi Authority.

Protecting our borders has always been a very high priority for the Runanga and remains this way. Protecting our borders goes hand in hand with preserving our identity.

To this end, the Runanga joined the High Court Declaratory Judgement case in July 2021 that was heard over five days in Wellington. It was not easy to become what the Court terms as an intervener in the case and the Runanga had to apply to the Court to join.

We have been told that the findings of the Court may not be available for up to 12 months. We are confident of our position as Mana Whenua within the blocks that we claim. Unfortunately but unsurprisingly, Ngāti Tahu-Ngāti Whāoa had a strong difference of opinion to TPT, all of which is reflected in the briefs of evidence and affidavits along with the representations made by our lawyer and that of TPT.

The Runanga have remained very vigilant and will continue to do so as we see the CNI Mana Whenua process as being our most important external mahi in front of us.

The Runanga have continued to try and strengthen the relationship with Ngāti Tuwharetoa. The challenging part is that there are multiple entities within Ngāti Tuwharetoa with many overlaps at a leadership level. Fortunately we are well aware of their internal structure and which organisation has authority over various areas that we engage with them on including CNI Mana Whenua matters and most recently resource consent issues.

Our relationship at the leadership level remains very strong, it is at an operational level where the Runanga will focus more of its energy.

There are multiple components to preserving our Ngāti Tahu-Ngāti Whāoa identity which includes but is not limited to:

- **Te reo me ōna tikanga,**
- **Whakapapa,**
- **Hitori,**
- **Whenua,**
- **Wai-Māori,**
- **Wai-Ariki,**

**Marae are at times described by some, as the final bastion of te ao-Maori engari, Mārae from right across the country are more often than not, registered with the Māori Land Court as a Mārae Reservation. This places the Crown (through the Māori Land Court) in a position of authority over our most visual historical institutions.**



VISITOR CENTRE  
entrance

192T







As te ao Māori continues to evolve, the Iwi leadership will challenge itself to identify methods or institutions that cannot be infiltrated by the Crown and therefore, create a model or system designed by Māori and exclusively for Māori without interference by the Crown, future proofing our institutions through exclusive design and development.

Achieving a Treaty Settlement is meant to go part way to providing some enablers to begin that journey of evolution of Te ao Māori.

Whilst Treaty Settlements are not the silver bullet, they are at least an enabler for dialogue with local and central government.

### **Statistics:**

According to Statistics NZ, the population for Ngāti Tahu-Ngāti Whāoa as at 2018, was 2,463.

Many more people will undoubtedly whakapapa to Ngāti Tahu-Ngāti Whāoa however, in the privacy of ones home, 2,463 individual adults elected to be identified as Ngāti Tahu-Ngāti Whāoa.

Other notable statistics include:

- **18.8% have a tertiary education,**
- **33.7% report owning their own home,**
- **59.2% are of working age of 15 - 65,**
- **14.6 under the age of 15 speak te reo Māori,**
- **21.8% earn \$50,000 or more per annum,**
- **28.5% are regular smokers,**

Obviously there is always room for improvement for the wellbeing of our people. Importantly, the Crown must meet its obligations for the needs of our people given the system the Crown created that has devastated te ao Māori.

The Runanga will assist these agencies where we are able, to better deliver their services.

### **Government reforms:**

The Runanga has been engaged with the relevant government departments and other Iwi to ensure the proposed reforms enhance the position of Iwi within the regulatory processes moving forward.

These reforms are highly complex and complicated and our operations team have kept themselves fully engaged in the process.

At a leadership level, we have reminded the Crown that on the face of what is being proposed as part of the reforms by way of inclusion of the Iwi Authorities as the Mana Whenua, the reforms are the responsibility of the Crown. This is important as the closer the country gets to a general election, we can expect the Crown to start stepping away from Māori initiatives.



## **Social and commercial Housing:**

- The Runanga and Tauhara North 2 have worked collaboratively and in partnership toward achieving positive outcomes from the government's investment initiative in social housing. This includes the 27 houses earmarked for construction in our rohe. Administratively, it is critical to ensure that a very robust process is followed to enable further government funding to continue to flow to these types of initiatives and others that are currently being pursued.

- A commercial housing initiative will be considered by the partnership to assist with part funding future social housing projects. As such, the Runanga and TN2T have been engaged in discussions with Taupo District Council about a potential subdivision which could serve a a commercial housing project.

## **Auckland Watercare:**

The Runanga engaged in discussions with Watercare regarding its consent application to draw more water from the Waikato River that affects the entire stretch of the river, particularly those with aspirations to draw water for future development purposes. The Runanga reached an agreement with Watercare and therefore, did not directly participate in the Board of Inquiry hearing to consider the merits of the consent application. The decision of the BOI was to grant the consent for a term of 20 years with some conditions set down. One of the conditions set down by the BOI is being challenged by Waikato-Tainui. The Runanga along with TARIT have elected to join the Appeal proceeding which will be heard by the High Court if a solution isn't found before hand.

## **Wairakei Pastoral Ltd:**

The Runanga have entered into a relationship agreement with WPL. This agreement is high level in nature and was signed off by Ross Green who is the Principal owner of WPL and myself as the Chair of the Runanga. It has been almost 20 years the WPL have been in ownership of their estate and this is the first time we have had some meaningful discussions and engagements with WPL. This is a great initiative that will continue to blossom and be part of the building of the relationship.

## **Strategic Plan:**

The Runanga will start the process of further developing the Strategic Plan that will include a 30 year financial model along with an LTP or Long Term Plan for our Ngāti Tahu-Ngāti Whāoa rohe.

We have engaged Lee Gray from Delloite to assist with this process. It will take a little time to finalise but we hope to expedite to process to reach a conclusion.

**Nō reira, kāti ake tēnā tātou e te Iwi.**

**Ā kia haumarū te noho ki a tātou katoa i te kānohi o te raruru i a te Karauna (COVID19).**

**E te Iwi, tēnā koutou, tēnā koutou, ā, tēnā tātou katoa.**









# GM Report

## **Tena tatou katoa – Nga mihi mahana nga mihi aroha ki a koutou katoa o te iwi me te whanau o Ngati Tahu-Ngati Whaoa.**

As we move from summer into autumn the cooler days are a welcomed relief and a gentle reminder that winter is on its way. At the moment the watercress is delicious and plentiful, and the days are still reasonably long enjoy whanau before daylight savings finishes on Sunday April 3rd.

Just like the changing seasons we have had changes within the Runanga that we've had to adapt to, sadly we farewelled Blanche Reweti our Office Manager in 2021. Blanche has worked diligently in the Runanga for the past 10 years, thankfully we have welcomed Blanche back as a Runanga Trustee.

I captured a photo of Auntie Julie Keremete and Ngaire Albert celebrating their birthdays. To all our kaumatua while we didn't have our annual get-together in 2021, the Runanga hopes to resume the Kaumatua Christmas celebrations in 2022.

Included in this edition is a flyer specifically for our Rangatahi – the Runanga would like to korero with You and get some ideas on how to better engage with you and what your interests are. Rangatahi (ages 17 - 23) please look at the Rangatahi Panui and fill-out the survey – your iwi needs you!!!

The three TARIT affiliates joined together for a tira hoe, starting at Te Awa Iti (the source) and intermittently paddling stretches of the Waikato River and Lake Arapuni through to Te Puaha o Waikato (the mouth), 63 affiliate iwi members and TARIT staff embarked on a 4-day journey to celebrate our 10-year anniversary. I would like to acknowledge the exceptional hospitality of our river iwi hosts, the warmth of your people and marae, the many waiata and abundance of kai invigorated us in more ways than one for the next leg of our journey. Thank you for sharing your stories and iwi history that have reverberated the breadth and length of the Waikato River for centuries.

It is pleasing to report that through securing Te Mana o Te Wai funding, the Runanga can employ 3 iwi members (2xRangatahi). We will also welcome Felicity Nepia to the Cultural Dept to assist with research mahi and developing tools to better retain our iwi history and our cultural identity. It's exciting to welcome the next generation into the Runanga on a more permanent basis.

The Runanga partnered with Tauhara North No2 Trust to secure funding from DoC Jobs for Nature late 2020, overtime the Runanga has built a reputable name with funding providers which influenced our successful application. This fund has enabled us to employ our people (Kaitiaki Whenua Ltd administered by TN2T) to enhance our tribal lands (Nga Awa Purua and Orakei Korako) and build marakai at two of our marae (Mataarae and Waimahana). This mahi is inclusive of delivering firewood from wilding pine work and Runanga stakeholder relationship, to our kaumatua living within and around our rohe.



I hope you enjoy the 2022 Ngati Tahu-Ngati Whaoa Runanga Trust Panui and appreciate some of the mahi the Runanga Departments have been engaged with over the past 18 months. The Runanga AGM (FY21) is being held via a webinar on Saturday 9th April 2022 (postponed last December due to Covid restrictions). We have advertised in the Reporoa Roundabout, Taupo Times, Daily Post and the Herald. If you are a registered Runanga member you can email us: [office@tahu-whaoa.com](mailto:office@tahu-whaoa.com) to register for our hui.

**Tena koutou Tena koutou Tena tatou katoa.**  
**Evelyn Forrest - General Manager.**









## NGA MANU O TE AO

OUR FUTURE LEADERS

**Where are our future leaders?**

Where are the birds of the world?

**The generation that seek the benefits of education**

The birds that reap the benefits of education?

**The artistic**

Like the songbird Tui

**The academic**

The intelligent Kea

**The rarest intellectual students of all**

And like the rare white heron

**Oh, where are you?**

**Listen to the advice of your superiors**

Listen, listen to the wisdom of Tane

**Aim high**

Soar to the sky

**Dream big**

Dream of the world

**Stand strong**

Stand vigorously

**And remain true to yourself**

As you develop into a tree of maturity

**My fellow peers, the most important people of all**

My friends, the important faces of all

**Rise up and represent your people**

Stand up, stand up for your tribe/family/school

**I know there is only one person who receives a reward.**

My reputation as an achiever is not due to my efforts alone,

**However, there are many of us that can strive for that same goal.**

But rather it was achieved through many others assisting me.

**Oh yes, oh yes, we can**

So if I can do it

**Oh yes we can, together!**

You can too, together!

Authors Felicity Nepia / Rangatahi o Reporoa Kareti.

Kei hea, kei hea nga manu o te ao?

Nga manu ka kai i te matauranga?

E Ko te tui

E ko te kea

E ko te manu kotuku e

I a ha ha

Ka rongo, ka rongo ki nga tohu a Tane

Topa atu ki te rangi

Ohia te ao

Kia tu marohi

Hei rakau kohure

Nga hoa rangatahi, upoko whakahirahira

Kia tu, kia tu mo to iwi e

I a ha ha

Ehara taku toa he toa takitahi

He toa takitini, taku toa e

Ana, ana, aue

Ana, ana, aue HI!



# Social

**Whāia te iti kahurangi ki te tūohu koe me he maunga teitei**

*Seek the treasure you value most dearly: if you bow your head, let it be to a lofty mountain*

The Whare Hauora sits centrally in Reporoa Village, and this is where we hold most of our day activities for whānau and the community to enjoy.



2020 was a year of COVID-19, which evolved into DELTA, then OMNICROM. Certainly a time of change plus a new way of thinking how we do things into the future.

## ***Kaumatua Christmas Function 2020***

A proud moment for our whānau and iwi as we were able to hold our Kaumatua Christmas Function at Waimahana Marae. A wonderful occasion that brought Ngati Tahu Ngati Whaoa together to embrace this taonga.

Thanks to whānau at Waimahana marae for the whakatau, atmosphere, and the delicious kai for this function; thanks also to Janie Pou's band which kept things lively as usual; and congratulations to 3 whanau celebrating their 'born' day on this day.







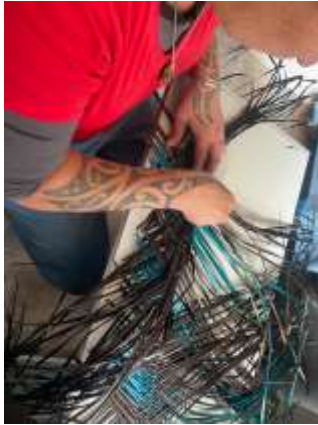
### ***Hauora / Wellbeing Activities***

In 2021, our programme activities were varied and attracted our whanau and some from the Reporoa community. A wide range of happenings at our Whare Hauora, including bottling preserves from our marakai and fruit trees, crochet (potae, poncho), harakeke, wheaty bags, tapeka.

Unfortunately at the end of 2021, our programme coordinator and mirimiri/massage person, Millisa resigned to venture into a new pathway for herself. We thank Millisa for her commitment during the many years she has been with the Whare Hauora, and we know she will be around to help out when she can.







### ***Covid-19 / Delta Response***

At the Whare Hauora we have responded as best we can when we are needed. At the end of 2021 we learnt some whānau were isolating at home due to being close contacts. Another phase of learning – we can respond quickly if we know there is a need, and having a plan for the ‘what if ...’ scenarios. Also ensuring that your contact details are up-to-date. We appreciated the support of Tauhara North No.2 Trust and Reporoa Foodmarket at this time.

### **Marae-based vaccination clinics / Drive through vaccination clinics**

We coordinated 2 marae-based and 3 drive through vaccination clinics. Thank you to Mataarae Marae where we held the marae-based clinics on 23 July and 13 August. The Delta variant proved more contagious than Covid19, so vaccination clinics changed to ‘drive-through’ clinics where those who were booked in, would remain in their vehicle when registering for the clinic, getting vaccinated, and waiting out the observation time. Thanks to Reporoa College where the set up was suited for separate entrance and separate exits of the drive through, held on 25 September, 6 November and 27 November. These were supported well by whānau and the community.

However none of this would not have been successful if it weren’t for our volunteers, including Parata Construction in Reporoa.







### Pokapū o te Taiwhenua Network

A model of care working on the basis of *'right care, right place, right time, right technology, right facilitation'*. This Network is a team of facilitators made up of a local workforce who can support the digitally excluded or digitally challenged client with video appointment facilitation or digital health coaching. This network is available to clients in the Lakes District Health Board region including Murupara and Ruatāhuna.

This project is contracted to the Runanga to implement (1) the kaupapa to support clients, if appropriate, to have a zoom video appointment with their clinician or health specialist. This appointment can take place in the client's home or a hub that is close to where they live. (2) Secondly, is to provide health coaching for clients to better manage their health through supported information available on the internet, and on the Pokapū o te Taiwhenua website.

<https://www.healthpoint.co.nz/public/other/lakes-dhb-pokapu-o-te-taiwhenua-network/>

### **Education**

We still participate in Reporoa Kahui Ako, and contribute to schools having access to te reo Maori learning.



No reira whānau, mā te wā, tēnā koutou, tēnā tātou katoa.

***He aha te mea nui i te ao? He tangata, he tangata, he tangata!***

*What is the most valuable thing in the world? A person, a person, a person.*



# Environmental





**Kia ora whanau!** Firstly, I would like to welcome our new environment team members-Jordan Taoho, Nathaniel Hay and Tyrhys Werahiko. Funding from one of our new projects has given us the opportunity to take on these guys to get some of our field work done while increasing our capacity and capability in the freshwater space and I will explain that a bit more below



Jordan and Nathaniel



Tyrhys

### Projects:

Our environment department continues to work through existing restoration projects and has also managed to complete some that have a strong cultural component. In our previous panui we tantalised you with a photo of a person standing beside two halves of a totara log with a title of "Kia mau ki te ukaipo". These two pieces of log were the birth of our pou whakairo, Tahu Matua and Toroa, which now stand proudly overlooking the Waikato River at Orakei Korako. Many months of hard mahi undertaken by Master Carver Lionel Matenga culminated in these beautiful pieces of craftmanship which were blessed and revealed in April 2021. Thanks also to Logan and his team (Shaun, Reggan and Alex) from Oaktree Hill Ltd and Gabriel from the Runanga who completed the engineering work that hold the pou in place and the initial shark oil preservative application. Everyone is welcome to view the pou during Orakei Korako Geothermal Park's normal opening hours and there is no charge to do this as they are located next to the visitors carpark.



Tahu Matua

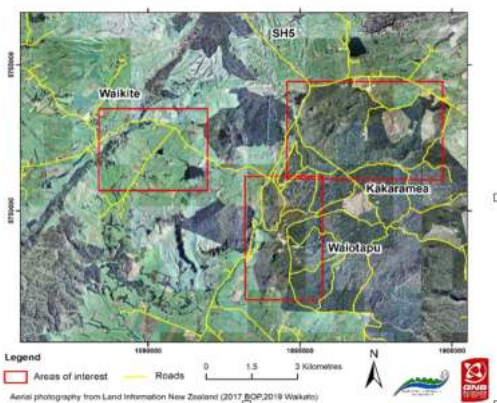


Toroa

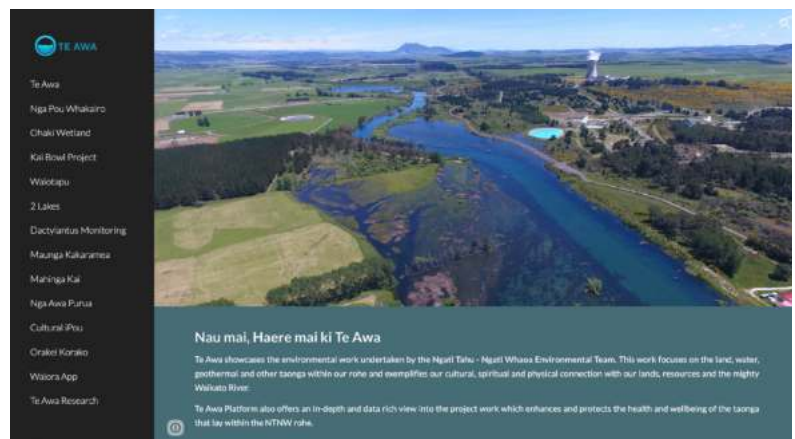
For more photos of this project, including the day of their blessing, please visit our new environmental showcase website <https://www.teawa.co.nz/>

## Other projects we've been working on that we haven't mentioned previously are:

- Kaitiakitanga of geothermal ecosystems through joint scientific and Mātauranga-a-iwi approaches:** Waiootapu case study which allowed us to capture some mātauranga from our kaumātua and marry it with scientific knowledge of the different geothermal features they used or knew of being used as well as many others within the field, supplied by our GNS project partners. Thank you to the GNS project team, all our kaumātua who shared their childhood memories and cultural and historic knowledge of Waiootapu and a special thank you to Harry Te Ngaru for interviewing our participants and helping to pull together the Tahu-Whāoa section of the report. The full report, which also has a section explaining our cultural history with Waiootapu as well as our kaumātua's input, is available on our Runanga website (pdf document listed under the Environment projects ) and our Te Awa website ([www.teawa.co.nz](http://www.teawa.co.nz))



Waiootapu geothermal field case study area



- Te Mauri o Nga Rua Hu Wai o Tahu Matua:** The Runanga partnered with Te Arawa River Iwi Trust (TARIT) on this project to measure the mauri of the Waikato River at certain points along its journey through our rohe. This is another project where we have combined our mātauranga and cultural history with western science which us the measurement. This work builds on a water monitoring project that TARIT began a few years ago where they installed equipment in certain points along the River to measure water quality in real-time. These measurements are the biophysical inputs that are combined with our mātauranga to give our mauri-o-meter reading. If you would like to know more or see the mauri-o-meter in action please visit either the Te Awa or TARIT website.



Views of the information available on the TARIT website



- **Wilding Pine Treatment at Orakei Korako:** It has been over five years since we last treated Red Hills, Tutukau Forest and Orakei Korako areas for wilding pines so we have partnered with Waikato Regional Council and the MPI National Wilding Conifers programme to revisit the site and poison any new pines that have made themselves visible since we were last working there. This project is to run over the next two years and builds on the work already done since Red Hills came back to the iwi through settlement.
- **Te Mana o te Wai Pueto Stream Restoration Project:** At the end of last year we signed a funding agreement with the Ministry for the Environment to build capacity and capability within our iwi to engage with Crown agencies on the implementation of the freshwater reforms that are being rolled out. This work includes the Three Waters and Resource Management Act reforms, both of which provide greater opportunity for Maori to actively participate in how these will be implemented across the motu from a Maori world view perspective. We have been very active in this space up to now, attending many of the hui and submitting on all draft legislation but I'm really looking forward to having our rangatahi with me as we continue this mahi as they will bring fresh ideas, opinions and voices to the engagement table.

The second piece of work included in this project is to improve the health of our freshwater bodies. We have partnered with Wairakei Pastoral Ltd for this part, which is focused on learning how to monitor water quality, build and implement mycelium filters and propagate native seed gathered locally to supply plants for a riparian strip along the Pueto Stream. Waikato Regional Council, DOC and Taupo District Council have also offered training and funding support so we can restore a section of the Pueto Stream to its original health, thereby providing improved habitat for mahinga kai and other wild birds. We will hold a series of wananga over the next couple of years so other iwi members can join us as we learn, the first of which is being held mid-March. If the idea of learning these techniques interests you please let me know so I can contact you when we run other wananga ([michelle@tahu-whaoa.com](mailto:michelle@tahu-whaoa.com)).

As I've just alluded to, another big facet of our work is to engage with government agencies, regional and local councils and resource consent applicants to ensure our cultural and environmental values and aspirations are considered when government agencies plan to change legislation or policies or when consent applicants plan to use, take or discharge into our environment. Engagement with resource consent applicants also provides us with the opportunity to establish or build on existing relationships with local businesses and this has proven very worthwhile in recent times where these relationships have ensured our cultural and environmental values have been at the forefront of new entities plans to establish themselves in the area. These relationships can then lead on to projects like the above or employment opportunities for our people so are a very important of our mahi for many reasons.

Anyway, this is just a summary of what the environment team have been up to in the last 18 months or so since our last panui and we will continue to ensure our iwi's voice is heard in any of the forums we are involved in while getting work done on the ground to improve our environment. **Nga mihi nui, Michelle**

## OBITUARIES 2020 – 2021

Dec 2020	Kim Wineera
March 2021	Blossom Monchow (Keremete)
May 2021	Koromaenga (Lofty) Warena Krystal Galloway nee (Campbell) Joe Kuti Reweti
June 2021	Aroha Te Whare Queenie Hatcher nee (Tanirau)
Aug 2021	AweAwe Olive Werahiko Materoa Mita
Sept 2021	Willie Werahiko
Oct 2021	Yvonne Herewini
Nov 2021	Bing McLeod
Dec 2021	Tamamutu Moke
Dec 2021	Dayton Katene

## UNVEILING 2020 - 2022

May 2021	Paul Moke Mary Moke Gwen Varnham Sharon Wakefield nee Moke Claudine Martin Dennis Moke William Moke Baby Moke Ella Taylor
Dec 2021	Eru George
Feb 2022	Hauauru (Chang) Matenga
Feb 2022	Sonny Nepia
Mar 2022	Krystal Galloway







# OHAKI PA UPDATE

15/03/22



**E te Rangatira, a Tahumatua tēnā koe,  
Karanga mai kia mātou ou whakatipuranga e whakamana i to ingoa.  
Tū rangatira, tū maia, tū tonu mō ake tonu atu mō to iwi a Ngāti Tahu,  
Tihei Mauri ora!**

Ohaki Pa is governed by the Tahorakuri A 1 sec 1 (Ohaki Papakainga) Reservation Trust. The Trust consist of 7 Responsible Trustees; Mark Reihana (Chairman), Aroha Campbell (Treasurer), Felicity Nepia (Secretary), Henderika Nepia, Valerie Moengaroa, Aylah Moengaroa and Leo Rika with two Kaitautoko, Support Trainees who are Jill Tipene and John Edwards.

## **WHAT'S BEEN HAPPENING?**

Last year, Ohaki Pa was able to have a Marae Tutohinga (Charter) wananga on the 16th – 18th of July 2021. Whanau were able to learn whakapapa, history and contribute to establishing our Marae Charter. A draft Charter has been formed and continues to be adapted.

Unfortunately, due to the ever-changing status of COVID cases the Trust decided to close Ohaki Pa from October 7th, 2021 until we have reach level 1 (Green Light) and continues to hold this status. We are working diligently to establish a COVID Marae plan to protect our whanau and the responsibilities of the Trust.

Nevertheless, during our closing, the Trust have been given great opportunities to help upgrade our facilities. We encourage whanau to add us on Facebook: Ohaki Pa - 338, Reporoa, for updates, information and to stay connected.

## **Nga mihi**







# Te Toke Marae

460 Te Toke Road, Reporoa. 3083



**Nga mihi ki a koutou katoa, e te mihi tuatahi ki te Atua o nga mea katoa.  
E te mihi tuarua ki nga tini aitua – haere haere haere atu ra.  
E te mihi tuatoru ki te iwi o Ngati Tahu-Ngati Whaoa.  
No reira, tena koutou, tena koutou, tena tatau katoa.**



## **Moe mai ra e kui**

We would like to acknowledge the passing of our kuia Aunty Materoa Mita, who passed away during the restrictions of Covid last year. Moe mai ra e Kuia, we will forever miss your cheekiness, beautiful smile and your support. Deepest condolences and aroha to our Mita whanau. We also acknowledge the many whanau who have lost loved ones in recent times – **ka nui te aroha ki nga whanau katoa.**



**Many thanks to the whanau who attended our working bee!!! Our marae is looking great!**



## **Marae Website and Digital Archive**

Te Toke Marae partnered with Shanan Tana from Touchmedia to apply for a Cultural and Heritage fund to develop our website. Some of the thinking behind the Website was to have an electronic record of our photos in our Wharetupuna and retain some of our history and stories. We held a wananga on Saturday 22nd January at Te Toke marae, we enjoyed our day learning and reminiscing together. [www.tetoke.co.nz](http://www.tetoke.co.nz)



## **Papakainga Development**

Last but not at all least we have had a series of hui around Papakainga and how we can work with Te Puni Kokiri and Tauhara North No2 Trust to establish 4 Kaumatua units at Te Toke marae. All 4 of the Ngati Tahu-Ngati Whaoa marae have been afforded this opportunity and we are humbly grateful. Thank you from the bottom of our hearts Tauhara North No2 Trust for making this possible and for the endless meetings with TPK. Thank you to the Runanga staff and Board for working with Councils at all levels to ensure these Papakainga and other projects within the rohe are supported and regulations are enablers not stumbling blocks – acknowledgement to Taupo District Council staff, Councillors and Mayor who are venturing out our way more often.



## **Whano, Whano Haramai te toki Haumi e, Hui e, Taiki e . . .**

Proceed, progress! Come to me my axe. Join together! Gather together! Unite together!



# Waimahana Marae

## **Kia ora Ngati Tahu Ngati Whaoa whanau**

Since our re opening of Rahurahu Easter 2019 we have been busy with mahi to the rest of our marae Much has changed from that time with the resignation of 3 of our Trustees. Shane Komene, Albert Te Hiko and Kay Werahiko.

**Our current Trustees are** Eru Rakena – Angela Werahiko – Linda Tawhai Mullins – Harry Te Ngaaru and Jo Te Huia. We are so immensely grateful for the mahi given to Waimahana from our 3 resigned Trustees during their time and wish them well with their future mahi. Our marae continues to grow and flourish with the call from Waimahana to whanau to return home and carry on her succession.

Whanau are returning to Waimahana to hold hui, weddings, whanau time and just to hang and korero. The marae supports all Kaupapa that brings positivity, creativity, learning and discussion to help whanau realise their strengths and abilities. This will enable us to keep our marae alive and breathing. We owe it to our tupuna to ensure she never falls into disrepair, neglect and dispassion again.

To this end the Ahu Whenua Trustees of Tahorakuri A17B1 who are the same Trustees of Waimahana Reservation, have entered into an Agreement with Tauhara Kainga Ltd, Sheeran Asc and Te Puni Kokiri to establish and build Papakainga housing on the block next to the Marae.





The first of these are 7 homes. Four 3 bedroom, two 4 bedroom and one 5 bedroom. We are tino proud to be able to offer rental housing to our Waimahana whanau from next year onwards.

There is still a lot of work to be done to settle all requirements for ease of management for these whare but we have the expertise for that to be a non-issue. This build is a huge step forward for our whanau. To be able to be housed in warm, affordable new homes right next door to our marae is a dream come true. It's a win win for us all. Especially with Waimahana being booked out most weekends. We continue to build our putea to finance our marae purchases ie: water tanks, urupa repairs, paint, kitchen purchases(combi oven etc). We still need to purchase big ticket items like chiller, dish sterilizers etc.

Our Marae Kaumatua build will progress alongside our Papakainga build. It is a very exciting time for all our Marae to be able to have kaumatua housing on our marae sites.

We are incredibly lucky to have Tauhara Nth No2 Trust champion our Ngati Tahu Ngati Whaoa whanau. We are the recipients of tuturu Maori Kaupapa in business. The Te Ao values and concepts that run deep from Tauhara Nth, show in their practices with our Marae and with our whanau. It also runs alongside and fits modern business practices.

**I give a huge mihi to our Chairperson Eru and wifey Ngaire. Their drive and push to get whanau on the Waimahana road to recovery has been inspiring. It has been a pleasure to be on the waka with you both.**

**Nga mihi mahana**

**Jo Te Huia**

**Waimahana Reservation Trustee**





# MATAARAE MARAE



mataarae.marae@gmail.com



Ngati Mataarae

*Tenei te karanga! Tenei te tangi! Kia tūwhera ngā tataui! Ki te Whai-ao! ki te Ao-marama, Tihei Mauri ora!  
Me Mihi ka tika ki a tatou mate kua Hinga ki te pō, Haere, Haere, whakangaro atu rā  
Apiti hono, Tatai hono, Ratou te Hunga mate ratou, Tataui te hunga ora, Kia tatou  
~ Tihei Mauri Ora ~*



Things have been on the quiet front for Mataarae Marae due to the Covid Pandemic. The mahi for our trustees and komiti members has been challenging and the safety and wellbeing of our people has been paramount. The covid restrictions put in place for tangihana has been hard for all Maori in Aotearoa alongside all the other barriers this virus has bought upon us. Resilience, kindness and aroha has got us through this tough time.

The walls of your whareniui can be a reminder of the dimensions (Wairua, Hinengaro, Tinana, Whānau, Whenua) of your Hauora. By nurturing and strengthening them all you support your health and wellbeing for yourself and your whānau. Reconnecting to your marae, your whenua, your tupuna, your whanau can do a world of wonders for your Whare Tapawha. Draw on your foundations to strengthen your walls. Kia Kaha, Kia Maia, Kia Manawanui...

On another note, moving forward there are many projects in the pipelines and the future is looking bright for our marae. Kia haumarū, kia ora tonu tātou.

Nga Manaakitanga,  
Mataarae Marae Trust

The following projects are kaupapa initiated by Tauhara North No2 Trust. Our trust is extremely grateful to the board and staff for all their efforts in continually providing opportunities that support our marae.

## ~ MANA MOTUHAKA GRANT ~

We are in the process of applying for a substantial one off grant available to all four marae in the rohe. This grant will hugely contribute to the future of our marae.

## ~ KAUMATUA UNITS ~

We have accepted an offer of 4 kaumatua units as part of a Papakainga Housing Project with TN2T and Te Puni Kokiri. This will be an exciting new venture for all marae trusts.

## ~ SHELTERS ~

The paepae and manuhiri shelters have been completed. This was an initiative from the Project Development Team at TN2T and built by Duncan Wills Builders in Reporoa. This is the first of many upgrades and builds as part of our maintenance plan for the marae.



## ~ CHARTER & GAZETTE ~

In 2020 an SGM was held to make changes to the current Marae Charter and Gazette Notice. We aim to set another SGM this year to finalise the changes and also an AGM. Keep an eye out for advertisements in local newspapers and our Facebook Page.

## ~ CONGRATULATIONS ~

....to Blanche Reweti who has been elected as the Mataarae Marae Representative on the Runanga Board.

~~~~~

....to Waimahana Marae Trust for turning the soil to their new Papakainga Housing Development...another awesome milestone for Waimahana..Ka mau te wehi!!!

## ~ MARAE DIGITAL CONNECTIVITY ~

We were fortunate to secure a package from Te Puni Kokiri to have Internet and WiFi access at the marae. This is valid for 5 years at no cost to the marae and is part of Governments Covid Response. With covid restrictions, zoom hui (Zui) have become a new normal in every situation where kanohi ki te kanohi is restricted. As a bonus the package included security cameras, which are situated around the marae.

## ~ MARAE BOOKINGS ~

Over the last two years we have implemented hirage charges for marae bookings. Tangihana still remains on a koha basis. To make a booking Contact: Nancy on 022 616 3593, or email: [mataarae.bookings@gmail.com](mailto:mataarae.bookings@gmail.com)



## **RUNANGA STAFF**

|                   |                            |
|-------------------|----------------------------|
| Roger Pikia       | Executive Chair            |
| Evelyn Forrest    | General Manager            |
| Sue Westbrook     | Social Development Manager |
| Michelle Phillips | Environmental Manager      |
| Esther Burnett    | Office Manager             |

### **Contact Details.**

*Physical address:*

Waiotapu Office  
410 State Highway 38  
Waiotapu, 3073

Whare Hauora  
224 Reporoa Rd, Reporoa

Postal Address:

P O Box 162, Reporoa, 3060

Phone:

|                   |               |
|-------------------|---------------|
| Waiotapu Office   | 07 3666 177   |
| Evelyn Forrest    | 021 0812 5304 |
| Sue Westbrook     | 021 2399 454  |
| Michelle Phillips | Ext 3         |
| Esther Burnett    | Ext 0         |
| Angela Werahiko   | 027 4991 596  |

*Websites:*

[www.tahu-whaoa.iwi.nz](http://www.tahu-whaoa.iwi.nz)

[www.teawa.co.nz](http://www.teawa.co.nz)

### **Regional Sub-Committees**

#### ***Poneke (Wellington)***

Secretary: Julianna Hutley  
Phone: 021 027 56275  
Email: [juliana.hutley@icloud.com](mailto:juliana.hutley@icloud.com)

#### ***Tamaki Makaurau (Auckland)***

Secretary: Rima Herbert  
Phone: 027 221 7283  
Email: [taniwha1949@gmail.com](mailto:taniwha1949@gmail.com)

#### ***Otautahi (Christchurch)***

Secretary: Araia Underwood  
Phone: 03 341 5750  
Email: [araia.underwood@hotmail.co.nz](mailto:araia.underwood@hotmail.co.nz)

**KA ORA TE IWI KA ORA TE TANGATA**

# Orakei Korako

